

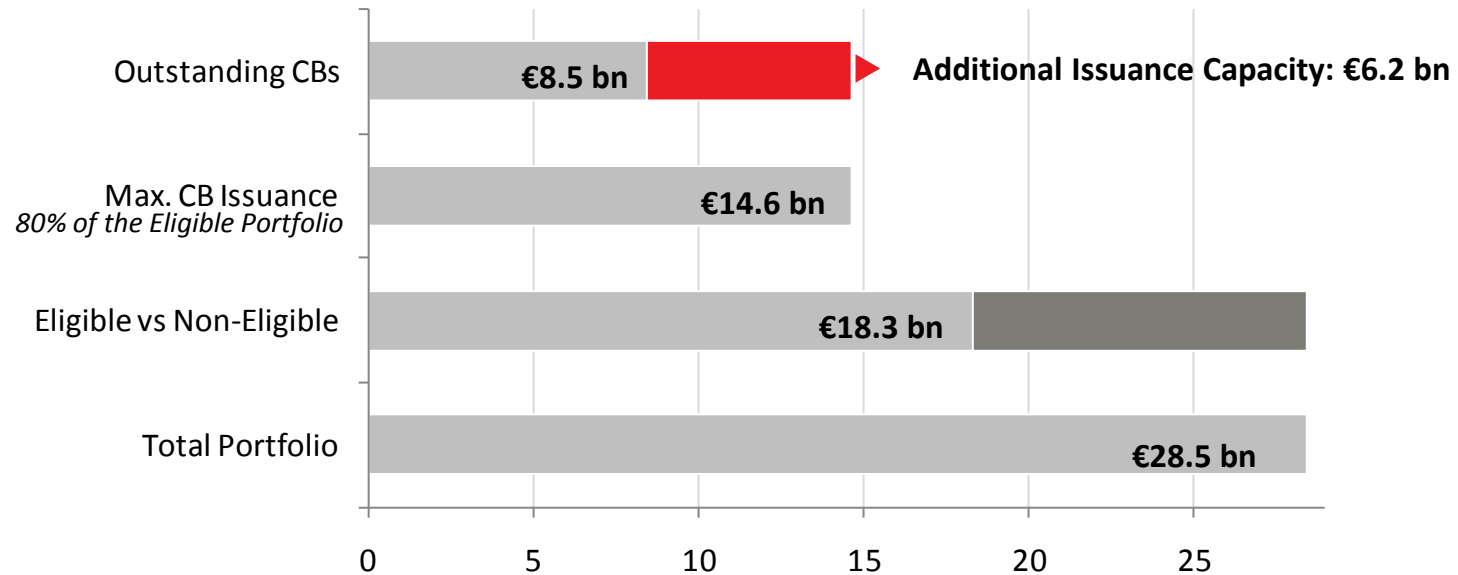
Annex: Kutxabank Mortgage Portfolio

2012Q3



Kutxabank's Mortgage Book and CH's Overview

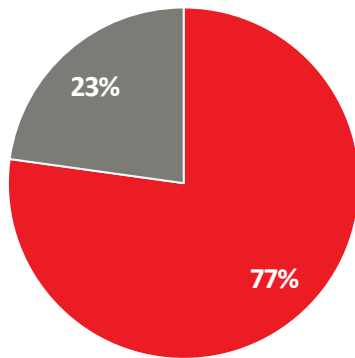
- ▶ **Total Mortgage Pool: €28.3 bn**
- ▶ **Overcollateralisation: 336.3%**
- ▶ **Rating: A3/AA- (Moody's/S&P)**



General features

TOTAL PORTFOLIO

Total amount (€ mill.)	28,459.5
Number of loans	239,319
Number of borrowers	389,382
WALTV (%)	60.71
WAS seasoning (months)	58.74
WAMaturity (years)	21.22
WARate (%)	2.60
WARate (%; floating rate loans)	2.61
Arrears >90 days (%)	7.71



- Residential
- Commercial

Residential

Total amount (€ mill.)	21,969.3
Number of loans	219,310
Number of borrowers	359,753
WALTV (%)	60.90
WAS seasoning (months)	57.97
WAMaturity (years)	24.80
WARate (%)	2.52
WARate (%; floating rate loans)	2.52
Arrears >90 days (%)	3.39

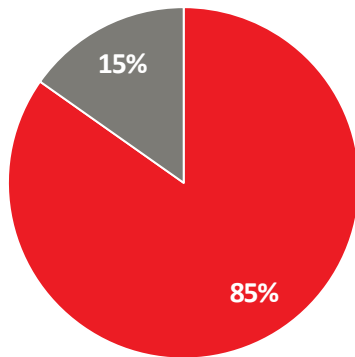
Commercial

Total amount (€ mill.)	6,490.2
Number of loans	20,009
Number of borrowers	29,629
WALTV (%)	60.09
WAS seasoning (months)	61.36
WAMaturity (years)	9.09
WARate (%)	2.86
WARate (%; floating rate loans)	2.92
Arrears >90 days (%)	22.34

General features

ELIGIBLE PORTFOLIO

Total amount (€ mill.)	18,306.0
Number of loans	173,759
Number of borrowers	281,771
WALTV (%)	52.66
WAS seasoning (months)	60.20
WAMaturity (years)	21.76
WARate (%)	2.48
WARate (%; floating rate loans)	2.49
Arrears >90 days (%)	1.76



- Residential
- Commercial

Residential

Total amount (€ mill.)	15,518.7
Number of loans	160,697
Number of borrowers	261,982
WALTV (%)	54.75
WAS seasoning (months)	58.95
WAMaturity (years)	24.04
WARate (%)	2.44
WARate (%; floating rate loans)	2.44
Arrears >90 days (%)	1.11

Commercial

Total amount (€ mill.)	2,787.3
Number of loans	13,062
Number of borrowers	19,789
WALTV (%)	41.51
WAS seasoning (months)	66.87
WAMaturity (years)	9.62
WARate (%)	2.67
WARate (%; floating rate loans)	2.78
Arrears >90 days (%)	5.38

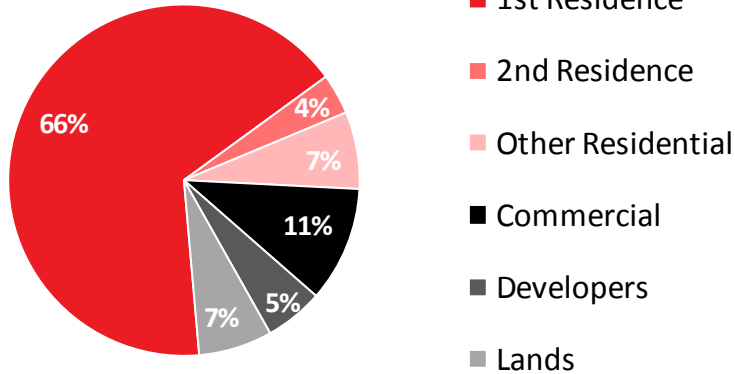
Breakdown by type of property

TOTAL PORTFOLIO

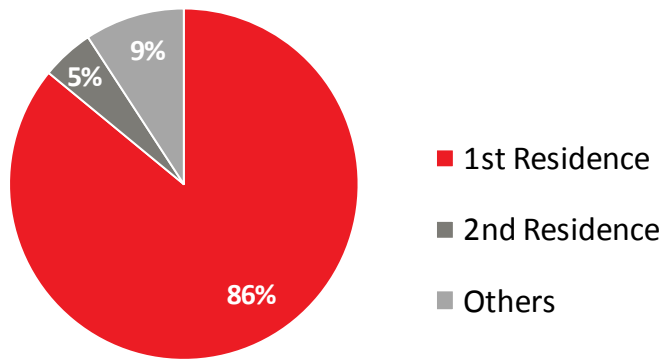
Total amount (€ mill.)

28,216.7

Type of property



Type of residential property

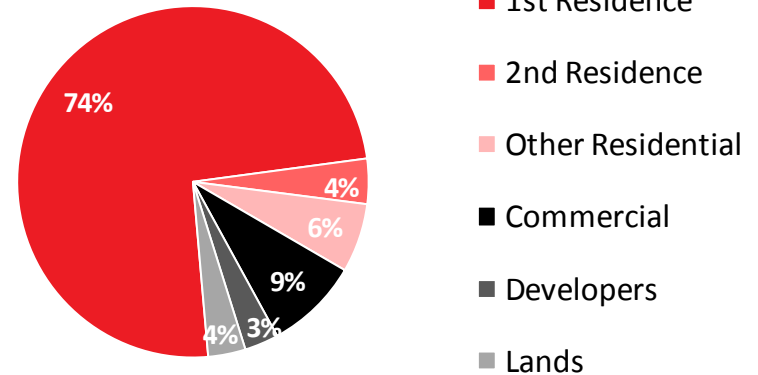


ELIGIBLE PORTFOLIO

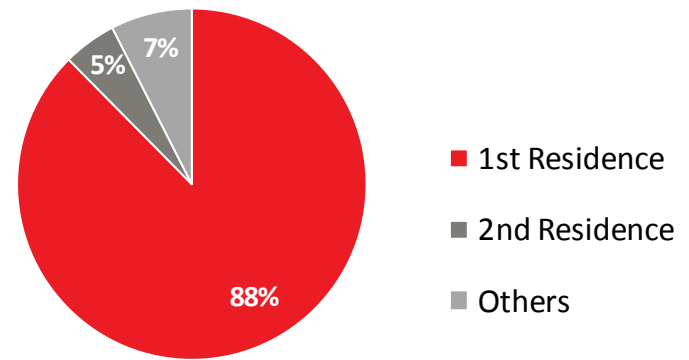
Total amount (€ mill.)

18,306.0

Type of property



Type of residential property



Breakdown by LTV

TOTAL PORTFOLIO

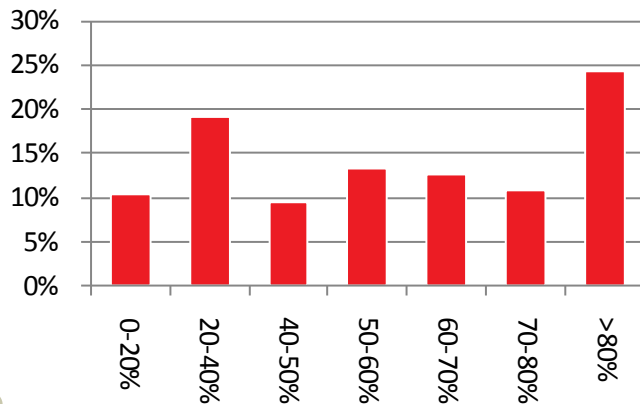
Total amount (€ mill.)

28,216.7

Residential WALTV: 60.90%



Commercial WALTV: 60.09%

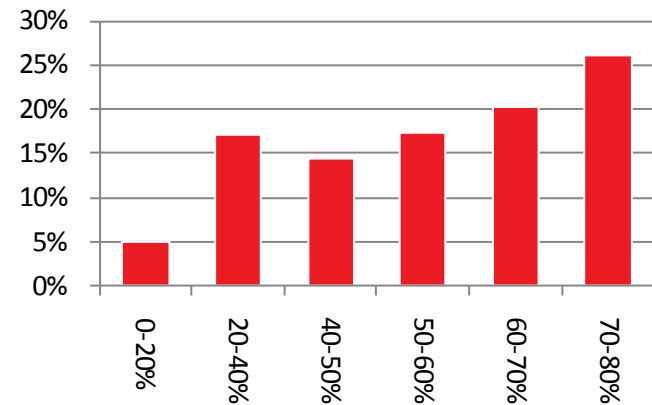


ELIGIBLE PORTFOLIO

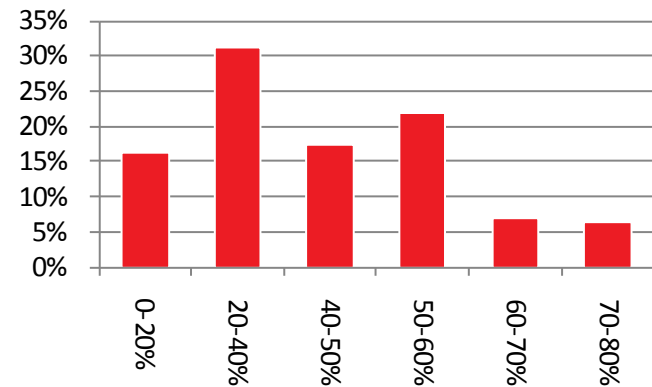
Total amount (€ mill.)

18,306.0

Residential WALTV: 54.75%



Commercial WALTV: 41.51%



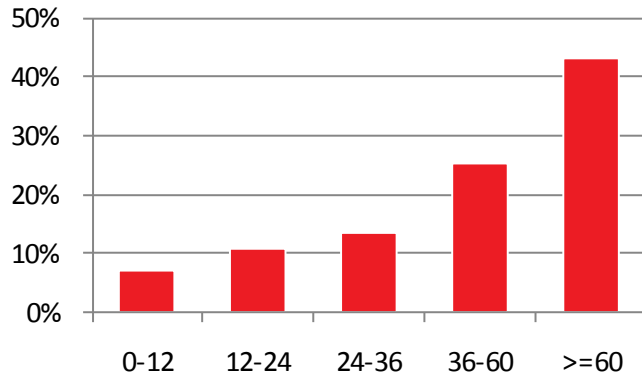
Breakdown by seasoning

TOTAL PORTFOLIO

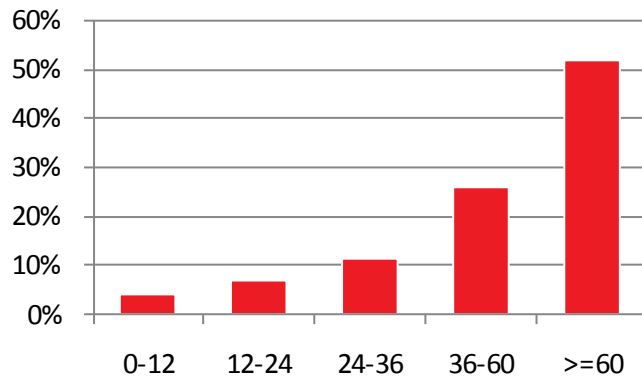
Total amount (€ mill.)

28,216.7

▶ Residential WA Seasoning: 57.97



▶ Commercial WA Seasoning: 61.36

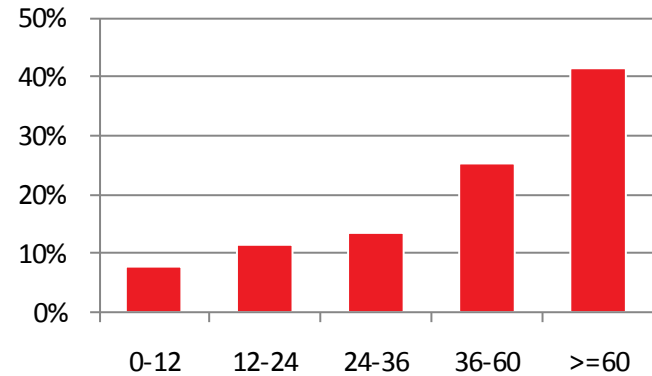


ELIGIBLE PORTFOLIO

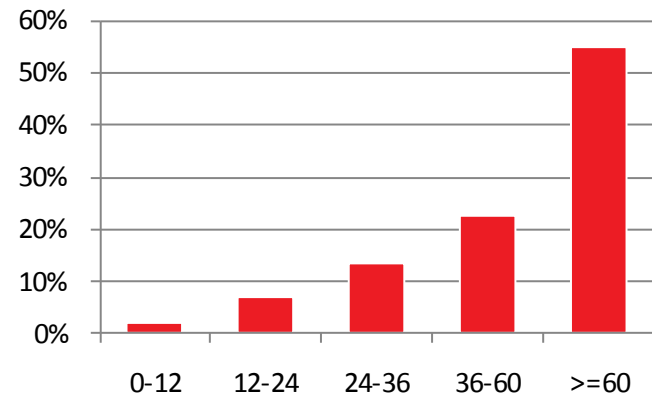
Total amount (€ mill.)

18,306.0

▶ Residential WA Seasoning: 58.95



▶ Commercial WA Seasoning: 66.87



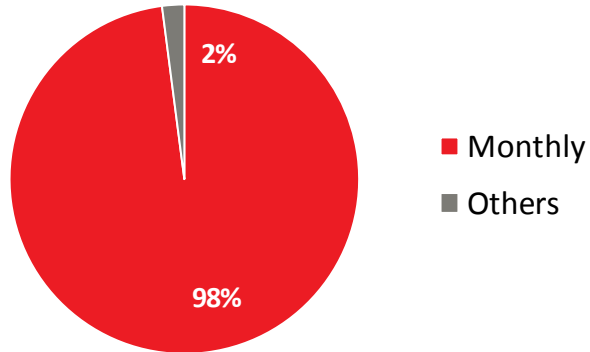
Breakdown by features

TOTAL PORTFOLIO

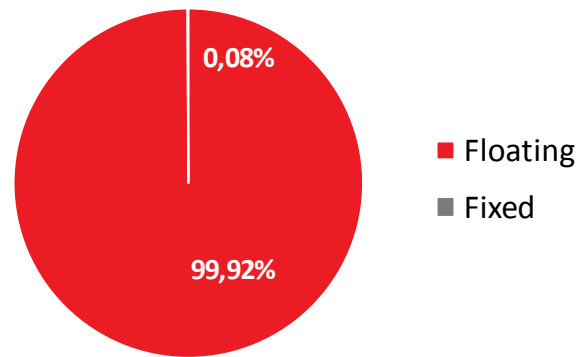
Total amount (€ mill.)

28,216.7

▶ Residential portfolio payment frequency



▶ Residential portfolio reference rate

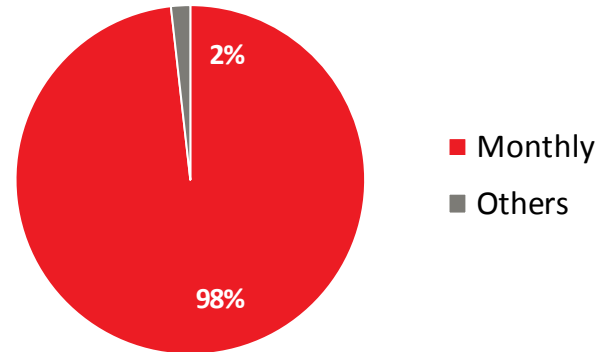


ELIGIBLE PORTFOLIO

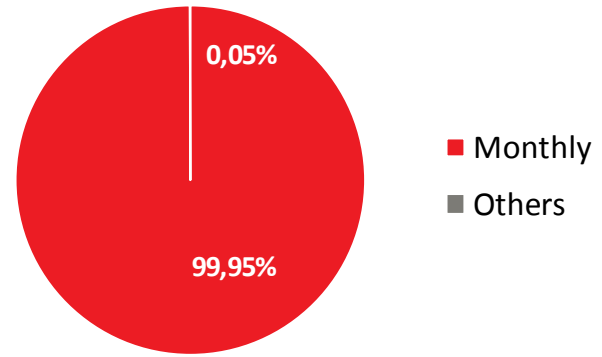
Total amount (€ mill.)

18,306.0

▶ Residential portfolio payment frequency



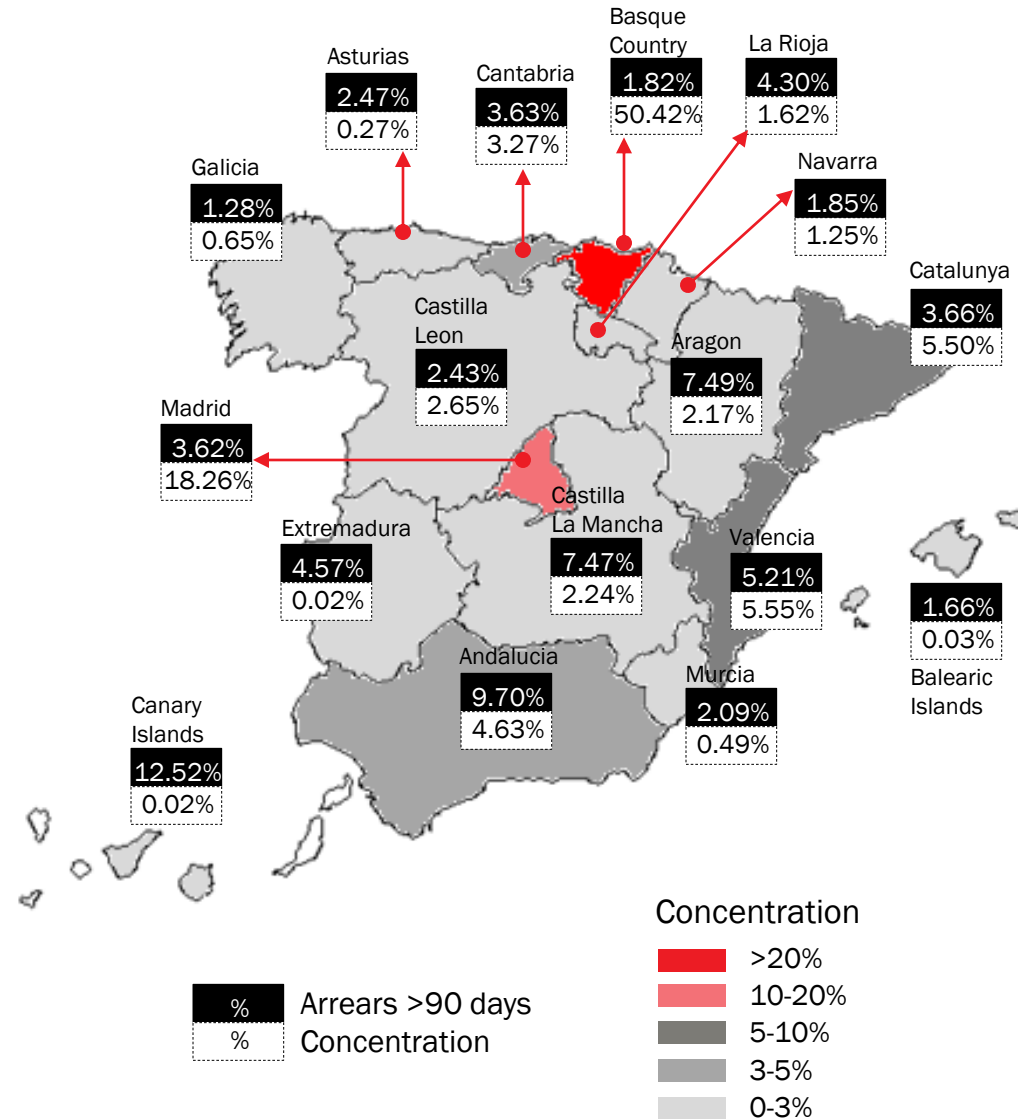
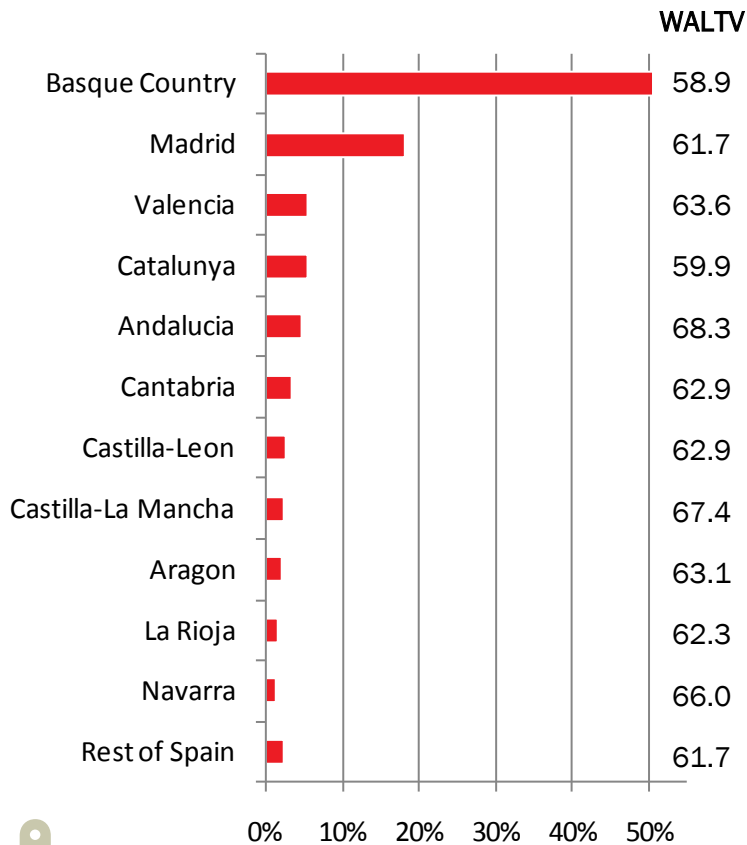
▶ Residential portfolio reference rate



Breakdown by region

Residential Portfolio

Concentration and NPL distribution



Breakdown by region

Commercial Portfolio

Concentration and NPL distribution

